

Numerical simulation of a rising bubble under the influence of electric forces using ISPH method

A. Rahmat^{1,4}, M. Yildiz^{1,2,3}

1 Faculty of Engineering and Natural Sciences, Sabanci University, Tuzla, 34956 Istanbul, Turkey

2 Integrated Manufacturing Technologies Research and Application Center, Sabanci University, Tuzla, 34956, Istanbul, Turkey

3 Composite Technologies Center of Excellence, Sabanci University-Kordsa, Istanbul Technology Development Zone, Sanayi Mah. Teknopark Blvd. No: 1/1B, Pendik, 34906 Istanbul, Turkey

4 School of Chemical Engineering, University of Birmingham, Edgbaston Birmingham, B15 2TT, United Kingdom

Key Words: *Interfacial flows, Smoothed Particle Hydrodynamics (SPH) method, Numerical simulation, Multiphase flows, Bubble dynamics, Electrohydrodynamics (EHD)*

The motion of a single rising bubble is simulated under the effect of electric forces using the ISPH method. In order to model interfacial forces on bubble surface, a diffusive interface with a finite thickness is employed. Using the leaky dielectric model, the electric forces act on the bubble interface and change the topology of the rising bubble, in competence with other interfacial and volumetric forces. Figure 1 represents the influence of the applied electric field on a rising bubble for an oil-water system with realistic density and viscosity ratios. Then, the effect of interfacial forces on the bubble shape and flow behaviour will be illustrated in variations of Electro-capillary (Ec) and Bond (Bo) numbers.

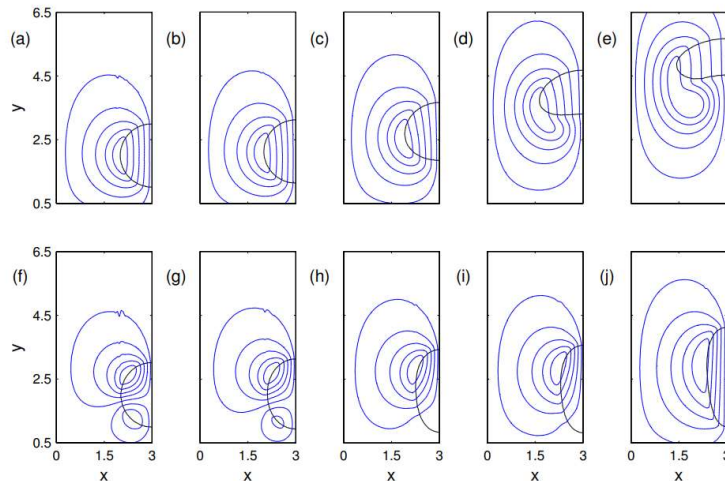


Figure 1: The influence of electric forces on a rising bubble; the top row shows a non-electrified rising bubble at different rising moments, and the bottom row shows a rising bubble with identical simulation parameters under the influence of electric forces.